



**PRESENTATION TO BEIRUT REGIONAL
CONFERENCE**

11 November 2008

Partners working together to rebuild Lebanon's future



THE MAG CONFLICT RECOVERY PROGRAMME FOR LEBANON



- **MAG in Lebanon**
- **Conflict Recovery**
- **Nahr El-Bared Refugee Camp**
- **End-State Strategy**

Partners working together to rebuild Lebanon's future





MAG IN LEBANON

Overview

- MAG Lebanon established its programme in November 2000
- MAG conducted the national Landmine Impact Survey in 2002 and a Technical Survey in 2003
- MAG's strategy is to support the Lebanese Government to achieve it's Long Term Plan
- MAG operations in south (Battle Area Clearance) and centre (minefield tasks)
- Currently coordinated and tasked by MACC SL south of the Saida and LMAC for the remaining areas in the country, future coordination from RMAC (N) – Damour to Blue Line
- Fully accredited by MACC SL and LMAC
- Strong relationship with LAF including developing their capabilities



MAG IN LEBANON

Programme Strengths

- More than 7 years of mine action in Lebanon
- Known to and trusted by local population and groups
- High level of resources and experienced national capacity for emergency response deployment within Lebanon and globally
- MoU to 31st December 2010 signed with LMAC on 12th September 2007
- Integrated approach to Conflict Recovery – Mine Action Teams, mechanical teams, Mine Detection Dog teams, compliance section and community liaison section
- Future funding primarily running costs – limited capital costs required (high % of funds for Mine Action Teams)



CONFLICT RECOVERY

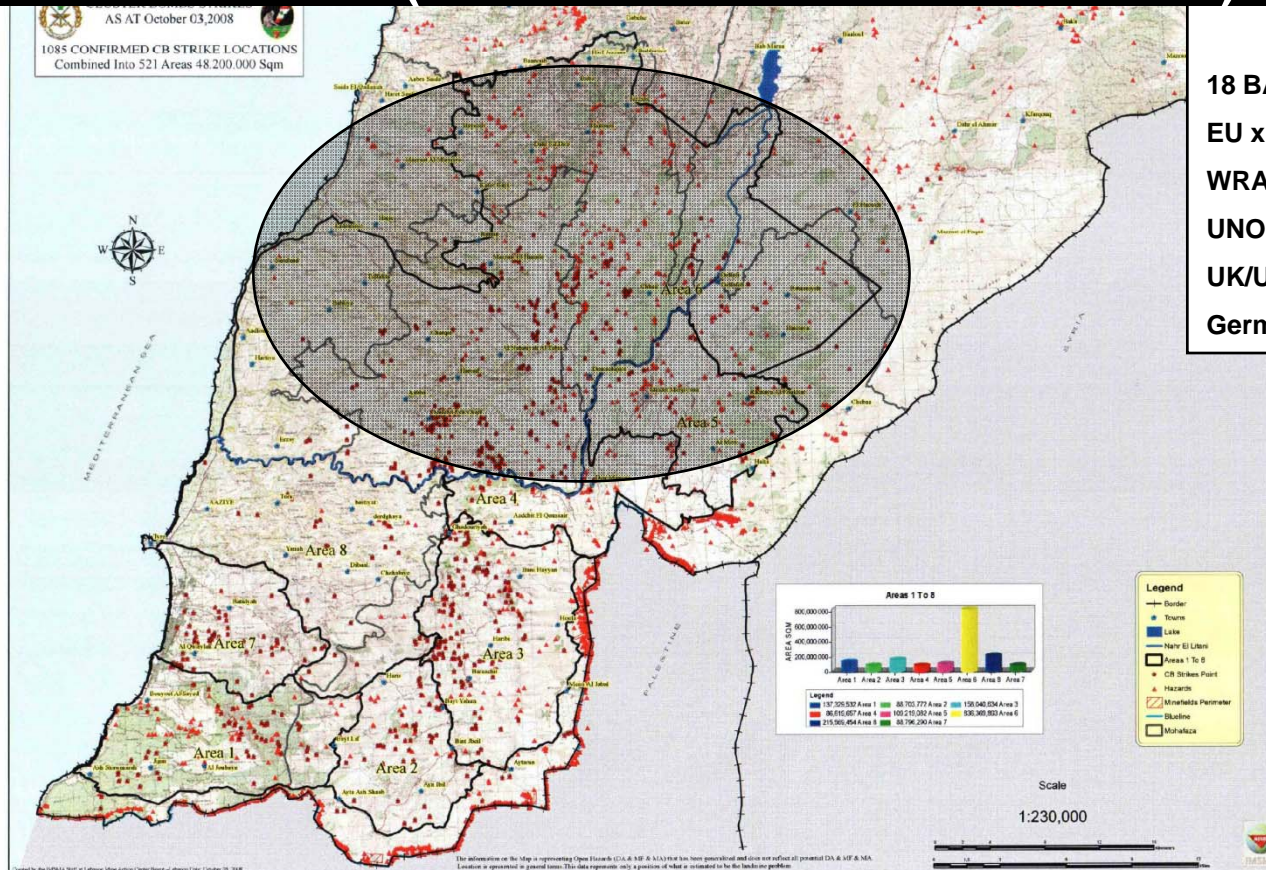
Overview

- 34 Days of hostilities July/August 2006
- Conflict recovery response immediately after Cessation of military hostilities
- Currently coordinated and tasked by both MACC SL and LMAC
- Currently fielding 18 Battle Area Clearance Teams and 3 Machines



CONFLICT RECOVERY

Battle Area Clearance (Current Resources & Locations)



Area 6

18 BAC teams funded by:

- EU x 2
- WRA x 11
- UNOPS x 2
- UK/US foundations x 1
- German Government x 2



CONFLICT RECOVERY

Battle Area Clearance (Vegetation Cutting)



magclearmines.org

Partners working together to rebuild Lebanon's future





CONFLICT RECOVERY

Battle Area Clearance (Electronic Search)



magclearmines.org

Partners working together to rebuild Lebanon's future





CONFLICT RECOVERY

Battle Area Clearance (Mechanical)



magclearsmines.org

Partners working together to rebuild Lebanon's future





CONFLICT RECOVERY

Battle Area Clearance (Total Outputs)

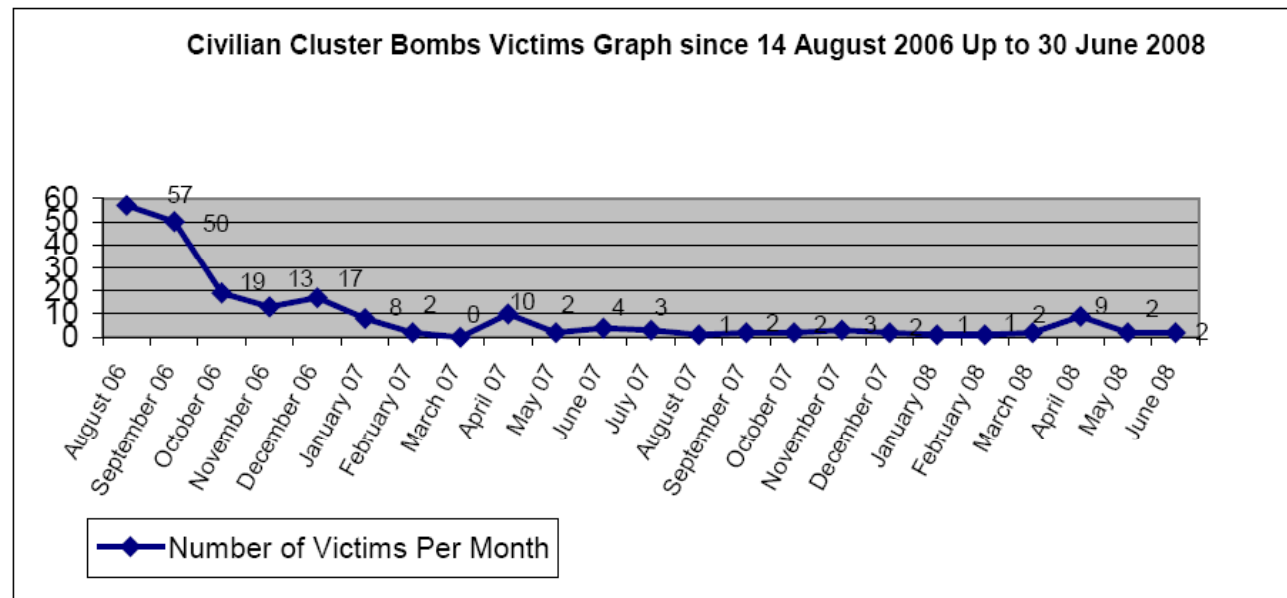
	Aug 06-Dec 07	Q1 Jan – Mar 08	Q2 Apr – Jun 08	Q3 Jul – Sep 08	Q4 Oct 08	TOTAL
Area Searched (Visual/Hand/Electronic Check) (m ²)	6,810,837	408,269	599,917	758,683	284,970	8,862,676
Mines Removed/Destroyed	0	0	0	0	0	0
UXO Removed/Destroyed	756	46	270	75	103	1,250
Bomblets/Sub Munitions destroyed	16,007	579	440	1,139	395	18,560
No. of Dangerous Areas Cleared	154	11	14	18	6	203



CONFLICT RECOVERY

Battle Area Clearance (DFID Outcomes & Impact 1)

- Teams focused upon villages which have a large life saving and agricultural impact
- Contribution to the reduction in casualties





CONFLICT RECOVERY

Battle Area Clearance (Outcomes & Impact 2 – Yohmor)

magclearsmines.org



Partners working together to rebuild Lebanon's future





CONFLICT RECOVERY

Battle Area Clearance (Future Plans)

- Maintenance of capacity, dependant on funding through 2009
- Continued cooperation and tasking via newly formed Regional Mine Action Centre - Nabatieh



CONFLICT RECOVERY

Battle Area Clearance (Conclusion)

The DFID-MAG Partnership is helping to **SAVE LIVES...**

- **Almost 9 million m²** of land cleared and made safe
- **Over 18,000** Remnants of Conflict destroyed
- **203** dangerous areas cleared
- **Assisting 450,000 people** at risk from death or injury from Remnants of Conflict
- Helping humanitarian agencies to deliver emergency and rehabilitation aid **free from the risk of death and injury**

...and making a REAL DIFFERENCE

Improved Safety of Communities

Supporting the Recovery of Sustainable Livelihoods

Rebuilding Communities

Key Contribution to National Recovery Efforts

Partners working together to rebuild Lebanon's future





CONFLICT RECOVERY

Minefields (Overview)

- 1 Mine Clearance team, 2 Mine Detection Dog teams and 2 machines working in Central Lebanon since 18th May 2007
- MAG sub-office set up in Mtolle, Chouf mountains
- MDD office and accommodation established in Mtolle
- MDD training facilities in Mtolle



CONFLICT RECOVERY

Minefields (Chouf Project)

- 21 minefields surveyed in 5 villages in Chouf mountains
- 3 tasks completed
- 6 mines found and destroyed

	Aug 06- Dec 07	Q1 Jan – Mar 08	Q2 Apr – Jun 08	Q3 Jul – Sep 08	Q4 Oct 08	TOTAL
Area Cleared (MDD/Mech/Hand/ Electronic Check) (m²)	1,819	4388	1531	20,387	3,683	31,808
Mines Removed/Destroyed	4	0	0	2	0	6
UXO Removed/Destroyed	1	0	0	6	0	7
No. of Dangerous Areas Cleared /Surveyed	21	0	1	1	1	24



CONFLICT RECOVERY

Minefields (Future Plans)

- 2 x Mine Action Teams (from January 1st 2009)
- 2 x Mine Detection Dog Teams (contract to be negotiated – from 1 April 2009)
- 1 Mechanical Team
- Coordination and tasking from Regional Mine Action Centre - Nabatieh



NAHR EL-BARED REFUGEE CAMP

Overview

- Extensive bombardment of the camp
- Significant contamination from RoC poses a serious threat to IDPs and Humanitarian Agencies
- Lebanese Government has requested international assistance



NAHR EL BARED REFUGEE CAMP

MAG Activities

- MAG mobilised technical expertise and armoured Front End Loader assets to Tripoli in the first week of hostilities
- Initially 2 teams on 24 hours notice to move
- 2 further teams were on stand-by due to growing intelligence picture
- Strong and direct coordination with Lebanese and UN Agency clusters
- Formulation of a MAG conflict recovery plan, included within UNRWA plan
- Assisted UNICEF in the development of MRE materials
- MAG's neutrality given political sensitivities
- Cross cutting enabler to all humanitarian deliverables



NAHR EL BARED REFUGEE CAMP -

Situation Update

- LAF have secured the camp
- LAF conducted emergency UXO clearance
- MAG assisted the first UNRWA mission into the camp to assess building damage and safety 12 Sep 2007
- MAG conducted a contracted Risk Assessment and Survey in April 2008
- MAG remains available for assistance, especially rubble clearance and advisors to UNRWA missions



END STATE STRATEGY (ESS)

Overview

By 2012, a Lebanon free from the impact of landmines (LMAC Long Term Plan)

MAG's Objectives

- To create a safe environment for recovery and development of valuable and productive land
- To strengthen people's ability to develop sustainable livelihoods and contribute to the local, regional, and national economic development



END STATE STRATEGY (ESS)

MAG's Long-Term Strategy

- Survey and clearance of high and medium priority Dangerous Areas
- Development of conflict recovery IWP
- IWP is a 3 year clearance plan of 110 relevant high and medium priority dangerous areas
- Significant contribution to LMAC's LTP
- To achieve this \$5m per year through a convergence of donor support (running costs only)



END STATE STRATEGY (ESS)

Conclusion

- Given stability and political will, the Lebanon End State can be achieved
- MAG is committed to supporting the LMAC's Long-Term Plan
- Final ESS document awaiting final LMAC 2008 workplan and the revised Long-Term Plan
- A convergence of donor support will enable MAG to clear high and medium impact Dangerous Areas by end of 2012
- LMAC maintain excellent relationships with MAG, fully committed to providing administrative, logistical and operational support in a timely and practical manner.